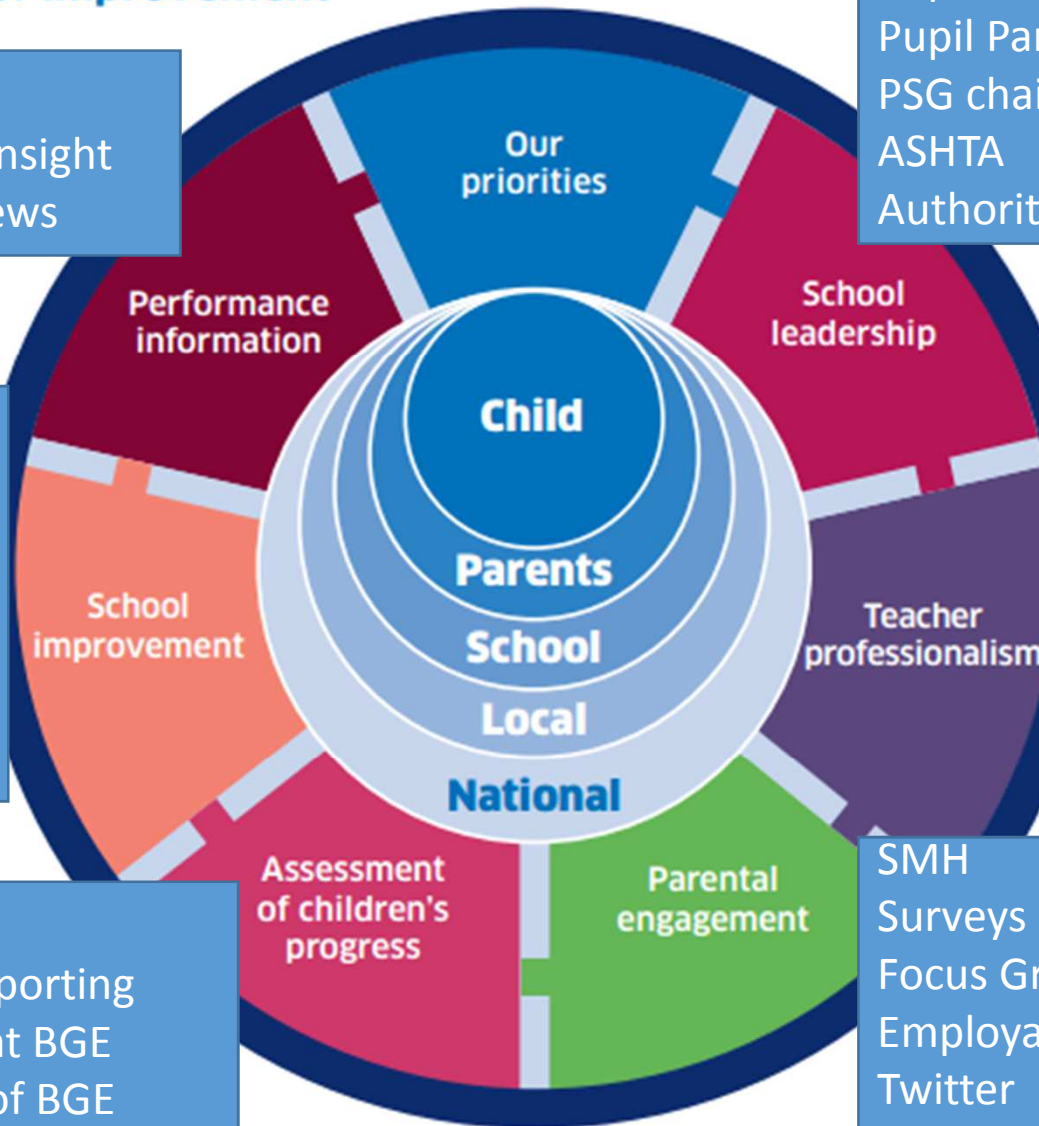


Improvements Session 2016/17

Key drivers of improvement

Improved results
Familiarity with Insight
Attainment Reviews

Collegiate time
New PTs
Tapestry leaders
Pupil leadership
Pupil Parliament- vision and values
PSG chairs
ASHTA
Authority representatives



Tapestry
Pace and challenge
Excellent lesson
Mentoring Violence Prevention
SfL workshops
Restorative Practice
Employability – PTs/database
IDL
Subject support classes

SMH
Surveys
Focus Groups - involvement
Employability – views/database
Twitter

TMIR
Quality of Reporting
Assessment at BGE
Moderation of BGE

HGIOS 4/inspection
Pupil Mentoring
Faculty Peer Reviews
Parental Focus Groups
Five a week
DCT work
Aiming Higher
Mock interviews

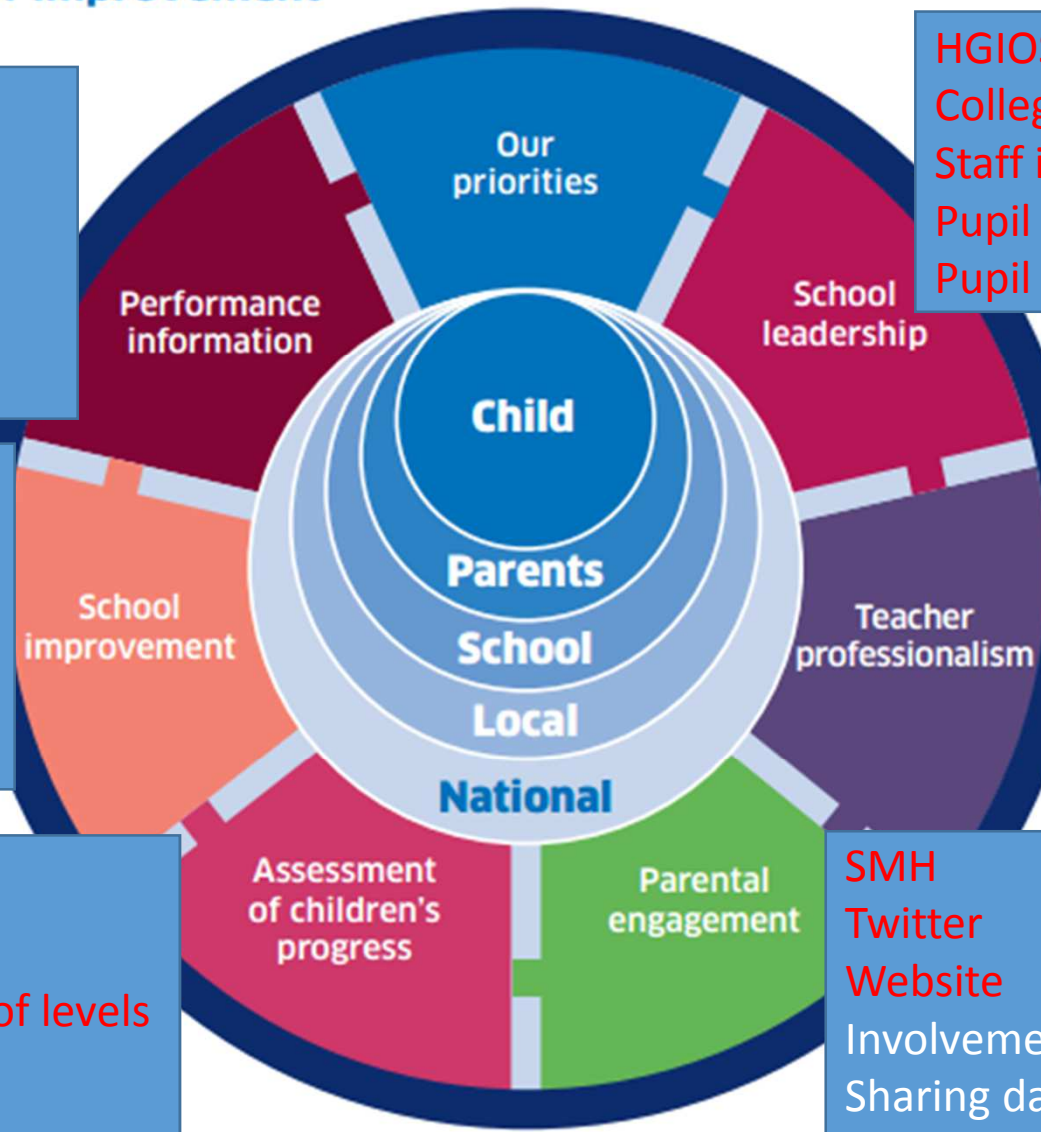
Improvement Priorities for Session 2017/18

Key drivers of improvement

Equity Funding
 Teacher certification
 Insight Tool/National Standard
 Assessments

Faculty Peer Reviews
 Safeguarding
 OCT
 Aiming Higher
 Growth mindset
 Student mental health

Tracking and Monitoring – N4/5
 Assessment at BGE
 Moderation/student awareness of levels
 New Pastoral Notes
 Skills



HGIOS 4
 Collegiate time
 Staff involvement
 Pupil leadership – of learning
 Pupil Parliament

Differentiation
 Glow
 Mentoring Violence Prevention
 Restorative Practice
 New N5 requirements
 Tapestry 2: Visible Learning
 Feedback
 Employability

SMH
 Twitter
 Website
 Involvement in learning
 Sharing data
 Career information